

APRIL 2025

BENTWORTH, LASHAM, AND SHALDEN PARISH MAGAZINE

**St. Mary's Bentworth; St. Mary's Lasham;
St. Peter and St. Paul Shalden**

Dear Friends

Fiona, Emily, Dan and I would like to say a really big thank you for the absolutely wonderful send off you gave us back on the 9th March. As you could see it was quite an emotional day for us - 11 years is a long time and full of memories and good things. We will always be grateful for your love, care, support and encouragement. You are an extremely kind and fun-filled people. It has been a pleasure to have lived and ministered among you.

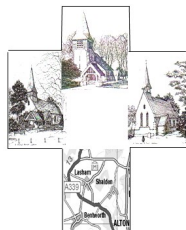
Also for the generosity of your gifts. We will enjoy eating, drinking and going to the theatre - all things which we particularly enjoy! And our new cathedral house walls will be hung with new artwork. Thank you. We will think of you often.

In my farewell sermon I talked about three 'H's'. I have been enormously encouraged by your being humble, being healthy and being hopeful. All excellent requisites for being a flourishing church community. But I want to leave you with the verse of what has become one of my favourites hymns. The hymn is 'There is a hope' by Stuart Townend and it is verse 2:

There is a hope that lifts my weary head,
A consolation strong against despair,
That when the world has plunged me in its deepest pit,
I find the Saviour there!
Through present sufferings, future's fear,
He whispers 'courage' in my ear.
For I am safe in everlasting arms,
And they will lead me home.



Best wishes Andrew



the editor

Welcome to Broadlands Equine Therapy & RDA , and North Hampshire National Trust Centre who are joining us each month, we hope.

page

2

MARCH

DATES FOR YOUR DIARY

- 29 Library: First Aid course 9.45am – 4.45pm
29 Beech National Theatre Live: *Dr. Strangelove* Village Hall 2pm & 7pm

APRIL

- 1 Alton Organ Society: Recital by Peter King St Lawrence Church 7.30 for 8pm
1 Medstead Gardeners Club: Ben Cross *British Alstroemeria & UK Flower Industry*
2 Roedowns WI: Lisa Marsh - Nutritional therapist Wiltshire Room 7.30pm
3 Lent Lunch: *In aid of a Village Defibrillator* St Andrew's Church Hall 12.30pm
5 St Andrew's Medstead Jumble Sale Church Hall 1.30 – 3.30pm Page 27
5 Library: Spring time Origami 10am – 1.30pm Page 28
5 Bentworth Cricket Club Annual Quiz Night Jubilee Hall 7pm Page 4
7 Lasham Coffee Morning with Mary and Nigel Chesterfield at Tapestry Cottage
8 Allen Gallery: Family Clay Workshop 11 am.
8 ASA: Lynne Gibson *Double Dutch symbols, etc...* Alton College 7.30pm P
9 Walking Church for Men Binsted Inn 6.30pm
10 Medstead WI: Louise Morrish *Forgotten Women in History* Village Hall 2pm
10 Allen Gallery talk: Arthur Kears *Technical Aspects of the Dam Busters' Raid* 7.30
11 Film: *Gladiator II* (15) Beech Village Hall 6:45 for 7:30 pm Pages 14 & 31
11 & 12 Medstead Players present: *Mind Over Manor* Medstead Village Hall 19.30
12 Bentworth Litter Pick: meet at the village green at 10am
12 Hampshire Farmers Market Alton High Street 10 - 2pm
13 ANHS: Field Meeting *Trees of Blackmoor Arboretum* 1.30pm-4.30pm Page 17
14 **Villager deadline for the May magazine by noon please**
16 ANHS: Field Meeting *Geology and plants of Selborne* 10am-1pm Page 18
18 Reflective Music for Good Friday Methodist Church 6pm Page 42
22 Library: start of Beginners Origami course 1 – 3pm Page 28
25 Library: start of Starting with Oil course 10 – 12noon Page 30
25 Library: start of Mindful sculpture course 1 – 3pm Page 30
25 Broadlands Quiz Night from 6.45pm Page 29
26 Library: Emergency First Aid course 9.45am – 4.45pm Page 32
26 St Andrew's Medstead Music Recital St Andrew's Church 6pm
26 Film: *Conclave* (12A) Beech Village Hall 6:30 for 7pm Pages 14 & 33

MAY

- 4 ANHS: Field Meeting *Dawn Chorus Day Walk* 5.30am-7am Page 18
13 ASA: Bernard Allan *Dame Laura Knight: from Newlyn to Nuremburg*
14 Shalden Annual Meeting of the Parish Council 7:30pm.
17 Medstead Gardeners Club Plant Sale in the Village Hall
22 Mansfield Park Surgery PPG: *Cancer Care Service* Medstead Village Hall 7-8pm

~ ~ ~ ~ ~

BENTWORTH

BENTWORTH CARE GROUP

Jackie Crawford

The members on duty for medical appointments in April are:

Sarah Whitley 07876 238 144; Sarah Gore-Brown 563122 / 07713 147 012;

Diana Willis 07958 912 260

We are also happy to pick up prescriptions or do shopping for those unable to do so themselves.

THE MUCK IN COFFEE MORNING

Once again we have been able to make donations to charity – this time to Alton Cardiac Rehab, and Naomi House. Thank you to all who come regularly and add their £1 to our funds.

We continue to meet at 10.30am every Monday – but not Bank Holidays, so no coffee on Easter Monday 21st April, or the 2 Bank Holidays in May. Do join us for all the other Mondays!



BENTWORTH GARDEN CLUB



Maryanne McEvoy

On Tuesday 18th March we met at Jubilee Hall for our first gathering of the season. It was a pretty good turn out, members all signing on for our great calendar of events for this year. The AGM was a quick formality before Sarah introduced our speaker Melinda Hilliard.

The topic was Garden Design from Ancient Egypt to Arts and Crafts. Melinda's talk was fascinating. She illustrated our journey with excellent slides. We started with a beautiful tomb painting from Ancient Egypt, moving on to the horticulture of the monasteries in Britain. We saw plans from the gardens at the Vatican and Hampton Court. She explained that this Tudor garden was the first used as a display of prestige and power.

We saw illustrations of Versailles, Blenheim and coming forward to William Morris's garden at the Red House. We were probably all wanting to add some of these to our bucket list!

If anyone would like to join us our next club meeting is Tuesday 15th April.

Our speaker is Guy Deakins, the topic is 'Using Sun Tzu in the garden' now isn't that intriguing!

Happy gardening everyone, spring is here at last!



**Bentworth
Cricket Club**

ANNUAL FUND RAISING QUIZ

Richard Hill

Bentworth Cricket Club will be hosting its annual quiz at The Jubilee Hall in Bentworth on the evening of **Saturday 5th April**, starting at 7pm. As usual the quiz

will offer a broad range of topics including fiendish questions to determine Brains of Bentworth with the winner team being awarded the Brick of Knowledge and of course something more liquid.

We are looking for teams of 6 +/- and the cost to include a choice of hot supper is £15 per head. Which surely has to be the best value in Hampshire for a Saturday evening! Please do bring your own drinks and cash for certain other fund raising events being run on the night. If you are interested in either assembling your own team or joining a table please contact: Richard Hill (rich101264@gmail.com) or

Ken Thomas (kenthomas899@gmail.com) to book your slot.



SAVE THE DATE FOR THE VILLAGE FETE!

Save the date for the Fete - the Bentworth Village Fete is due to return on Saturday **5th July from 14:00 – 17:00**. Join us for a fun-filled afternoon of delicious food, live music, dancing, beer and Pimm's, a BBQ, raffle, stalls and activities.

Where: St Mary's School playing field, Bentworth

We'll be sharing more details about how to get involved soon... stay tuned!

BENTWORTH PARISH COUNCIL

Nikki White

The Parish Council will be running a villager litter pick and tidy up on **Saturday 12 April**. Meet at the village green for **10am** whereby we will issue you with litter pickers, high-viz vests and waste bags. Please come along and help us keep our lovely village looking tidy and beautiful. You might bring some gloves to protect your hands.

If you are unable to come on the day but would like to help out, then please do, even if it's a small stretch of road near your house.

Many thanks nikki@bentworthparishcouncil.org

BENTWORTH PARISH COUNCIL

Neal Day

has vacancies for the position of councillor.

Would you like to play a part in shaping the future of Bentworth. As a Parish Councillor you will focus on the quality of life for those living in the parish.

The Parish Council works to identify issues which are important to the lives of the residents they represent. Councillors influence and help to shape the long term development policy for the parish and as part of the planning process, comment on applications.

Bentworth Parish Council meets on a monthly basis with meetings open to the public.

If you would like to become a councillor for Bentworth please contact the Parish Clerk

clerk@bentworthparishcouncil.org

or for more information or to discuss further contact the Parish Council Chair Person

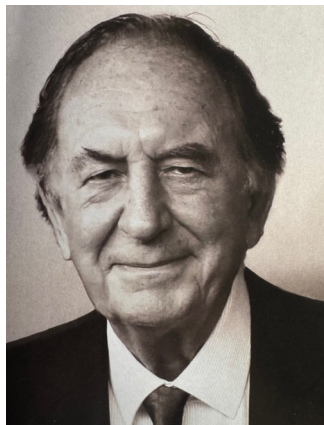
neal@bentworthparishcouncil.org

* * *

LASHAM

JOHN BENNIGSEN

Alexandra Bennigsen



It is with a broken heart that I advise you the love of my life, John Bennigsen, passed on 14th January 2025. He was a kind, noble, loving, fun and a truly honourable man. He will be sorely missed by me and everyone who knew him. I will love you forever John Bennigsen. Alex

Simon Hancock

The venue for the funeral service for John Bennigsen was St Mary's Church in Lasham on Tuesday 18th February. The church was beautifully decorated with many arrangements of spring flowers. The congregation was treated with wonderfully played Bach and Vivaldi music by the Rotherhurst Ensemble Quartet.

Rev David Chattell conducted the service, with some very well chosen hymns and tributes and bible readings by the family. A skilful organist lead the large congregation of about 110, in singing the hymns.

We were reminded of Johns love for life. The enjoyment of powerful cars, going to the races as well as fine wine and whisky. A keen aviator and very successful businessman as well as loving and supportive family man.

Those who were able, went back to the family home for refreshments. It was a moving tribute to a well loved man by friends and family.

LASHAM COFFEE MORNING

Anthea Del Mar

Although the March coffee morning was at Avenue Farm, the stars of the show were Katie and Simon who very kindly helped Michael with serving drinks and food as Anthea was somewhat incapacitated. Sandra cheered everybody's morning by producing one of her wonderful cakes which go down a treat, Victoria and Antonia contributed brownies (we should have had a competition) and Anthea bravely opened packets of biscuits.

We were delighted to welcome Peter and Ingrid Owen-Jones just a year on from Ingrid's accident. They manage the wheelchair manoeuvres with great expertise. We had an excellent turnout of villagers - there is no doubt that the sun streaming in lifts everyone's hearts and it was a thoroughly happy gathering.

The next Coffee Morning will be hosted by Mary and Nigel Chesterfield at Tapestry Cottage on April 7th.

Do come. All welcome.





LASHAM VILLAGE ANNUAL LITTER PICK

Jane Tobias

Many thanks to everyone who took part on Sunday 2nd March, and in the days before, collecting rubbish from the verges and hedgerows leading in & out of Lasham. And for the removal of the pile of bags on Monday 3rd March

We had a glorious day and a very productive litter pick, keeping our lovely Village clean & tidy.



Many thanks once again.



* * *

SHALDEN

St PETER & St PAUL GUILD OF MARTHA

Kirsty Ennever

April

5 Jane Shirvell / Lin Baxter
12 Karen Saponaro / Lynne Hignett
19 Michele Rankin / Kirsty Ennever
26 Rozanne Wilson / Rosalind Ommanney

May

3 Jane Shirvell / Lin Baxter
10 Karen Saponaro / Lynne Hignett
17 Michele Rankin / Kirsty Ennever
24 Rozanne Wilson / Rosalind Ommanney
31 Debbie Todd / Silvia Blake

SHALDEN LITTER PICK

Frances Anderson

On a sunny Sunday afternoon in March, about 25 residents from Upper Anstey Lane, Old Odiham Road and the Golden Pot gathered for the Annual Litter Pick.

Armed with Hi Viz jackets and picking sticks, we set off to clear the rubbish between Alton Golf Course and the Golden Pot.

We collected lot of rubbish, drinks cans, a wheelbarrow full of glass bottles and 2 TV's. Now, for a while, we can enjoy the natural beauty of the countryside, unspoilt by thoughtless litter louts.



* * *

GENERAL INTEREST



Kim Ottridge

News

Our fund-raising for our 70th Anniversary year has got off to a great start with the launching of our Auction but back at

Broadlands there is lots going on with the ponies and our participants.

We have been lucky enough over the last few months to have been offered three ponies on loan. We have welcomed Harry, Teddy and Mia to the stables. Both Harry and Teddy have hit the ground running and are already working well in the riding sessions, it will take a little longer before Mia is used in the school but she is incredibly sweet and proving very popular with our visitors.



Harry



Mia



Teddy

Although the weather has been very wet and very cold, our participants turn up every week to enjoy time with the ponies and thankfully they are able to continue to do this as the riding school is covered. The ponies continue to spend the nights out in the fields but they have thick rugs to keep them warm.

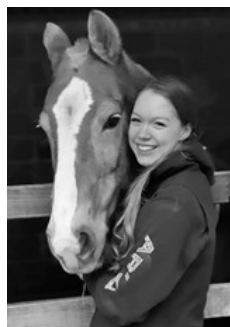
However, we are looking forward to the hopefully longer warmer days of spring!

A New Coach

Congratulations to Freya for being awarded her Group Coach Certification!

Freya has been working hard at her coaching qualification and we are delighted that all her efforts have paid off. She works hard to ensure the ponies are healthy and fit. We are so proud to be supporting her in this new journey.

As we move into the Spring we have more events in the pipeline, we would be delighted if you could join us!



MARATHON MAN



We are delighted that Ed has chosen to run for Broadlands in the **2025 London Marathon** in April. Ed is not a regular runner, but now that the festive period is behind us, he will start to follow a training regime to get him marathon ready.

Asked how he is feeling about the challenge he said, "When I entered the ballot, I really didn't think I would get a place and was astounded I received an email confirming a place for me. I felt I couldn't not do it having got a place and then decided that Broadlands would be a worthy cause. I now feel motivated to get myself fit enough to complete it and raise some much needed funds for Broadlands 70th Anniversary Year."

To support Ed please visit:

<https://www.justgiving.com/page/edward-ottridge-1735401663333>

If you are interested in taking on a challenge for Broadlands, please don't hesitate to contact us.

WILD LIFE

Diana Tennyson

Website update: Anyone checking for information on the WS&C website, please note that the website has been taken down due to it being outdated, and the very high cost of maintenance. As we are continuing to connect and work with several campaign groups in East Hampshire via Whatsapp, NextDoor and Facebook we can reach far more residents this way, rather than via a website.

Wildflower verges: Having updated information in the March issue of FMN on wildflower verges in the village, we were horrified to note the destruction of a Road Verge of Ecological Importance (SINC) Site of Importance for Nature Conservation at the top of Blackberry Lane, which has been totally destroyed by the new residents. We noted that new residents were making space for parking in the front garden at the end of February, but imagine our horror when we saw that the verge, owned in part by HCC - Highways, had also been destroyed. Sadly we think that the rare orchids that grow on this verge, the Violet Helleborine, *Epipactis Purpurata*, are unlikely to have survived.

Information has been passed to Hampshire Biodiversity Information Centre (HBIC) and to Nicky Court, HBIC Manager, who expressed her dismay. There are leaflets written up by Nicky pinned to trees and telegraph poles, and white Wildflower posts indicating that these verges are protected. If anyone was unsure, there is a contact number visible on both the white Wildflower posts and laminated information, so the general public can be in no doubt that these verges are protected for our rare orchids. Information and the curtilage for the property was initially checked by Richard Peach at HCC, with Land Registry.

Badger Orchard and basking bank: We are delighted to see that the Badger Orchard at the end of Badger Close has been replanted with fruit trees by Four Marks Parish Council. A selection of apple and cherry trees (*malus egremont*, *malus sunset*, *malus jonagold* and *pyrus comm*) have been planted up. We hope the local badger population enjoys the fruit. The trees have been staked and new fencing has also been set in place.

Badger Protected Area: The main badger sett is in the Badger Protected Area (BPA) to the rear of Badger Close. An outlier sett was discovered a few years ago in the dell. I recently updated information for basking banks in FMN, and how helpful they are for Slow Worms. A large number were identified by the ecologist, Mick Neeve, our local badger expert, prior to development.

Surface water flooding: It appears that this has always been a problem and whenever we experience heavy or prolonged rainfall, water naturally flows downhill. This can be seen on the A31 where rainwater flows downhill to the Chawton roundabout, and on the A31 where rainwater flows directly downhill towards Ropley. There can be no doubt that we are affected by torrential rainfall, probably more so than Winchester. Excessive



development in Four Marks and Medstead has created more hard surfaces which only adds to the problem. Sustainable Drainage Systems (SuDS) installed on some developments, and soon to be part of the Mount Royal development, may help prevent rainwater runoff, but although they are said to be environmentally beneficial they are, in my view, certainly not the answer to the problem.

Flooding, Alton Lane: Flooding is also experienced in Alton Lane where several days after heavy rainfall, a river still flows from the top of the lane downhill towards Five Cross Roads, and Four Marks Primary School. When I checked the area the following day, I saw signage indicating a **FLOOD** on several roads approaching Five Cross Roads.

This flooding was so bad that one road on the approach to the Primary School resembled a river on 22 February, and likewise the bottom of Gradwell Lane and Brislands Lane. *(Many thanks to Jane Thomson for her picture)*. Jane has also raised the dreadful state of a BOAT (Byway Open to All Traffic) at Barn Lane which becomes impassable on foot during heavy rainfall. The problem is exacerbated by 'off roaders' and 'scramblers' using Gradwell Lane as an extension of their circuit from Barn Lane.

Waterlogged fields: It is also clear that fields off Alton Lane remain waterlogged after heavy rainfall, and although beginning to subside six days later on 28 February, rainwater could still be seen draining off farmland and flowing downhill towards Four Marks Primary School. At the time of writing further development has been approved in Alton Lane, and further development is proposed for fields off Alton Lane.

Murmurations: We have seen Starling murmurations on Springwatch in 2024, and note that this is a common event at Brighton and Eastbourne piers.

Residents and tourists stop to look at the birds swooping and diving until they ultimately descend to roost under the pier on the steelwork. There is apparently safety in numbers, but it also helps bonding.

(Many thanks to Dr. Arthur Barlow, for the picture of Starlings at Eastbourne pier).



Here in Four Marks we have Rooks displaying a similar murmuration in the trees off Alton Lane. Birds also gather here before flying northwards toward Chawton Park Woods where they roost in Beech woodland.

* * *

EVENTS

THE CURTIS MUSEUM AND ALLEN GALLERY

Jill Line

OPENING TIMES Tuesday to Sunday Curtis 10am – 4.30pm. Allen 10.30 – 4pm

www.hampshireculture.org.uk/curtis-museum www.hampshireculture.org.uk/allen-gallery

ALLEN GALLERY

April events

EXHIBITION Consuo Textile Art Thurs 17 April - Sunday 25 May. FREE entry

Consuo is a group of professional Textile artists, including previous exhibitors from our popular Echoes of Iceland shows - Jennifer Jones, Tara Kennedy, Annette Mills and Delia Salter.

This group of exhibiting textile artists create 2D and 3D artworks using a variety of processes, techniques and materials, including fabric manipulation, dyeing, weaving, knitting, stitching, printing, basketry and mixed media.

Taking their name from the Latin for 'to sew together', Consuo Textile Art comprises alumni from textile courses at the University for the Creative Arts, Farnham.

Website link <https://www.consuotextiles.co.uk/>

TALK Thursday 10th April 7.30 pm.

Technical Aspects of the Dam Busters' Raid by Arthur Kearse.

This talk is sponsored by the Friends of the Curtis Museum and Allen Gallery, and entry is FREE. Donation welcome.

WORKSHOPS Tuesday 8th April 11 am.

Family Clay Workshop

Our popular clay workshops give the whole family a chance to enjoy an hour of making, using air-dry clay. In this loosely-guided session, you will learn how to make a small pot or other creation, following a general theme.

£6 per person. Book by email at allen.gallery@hampshireculturaltrust.org.uk

Easter Trails include an Easter Birds Egg Hunt and a new Dodo Natural History Hunt. 1st - 29th April.

JANE AUSTEN 250.

This year is the 250th Anniversary of her birth, and the Museum & Gallery will be joining other organisations in Alton - and Chawton - to celebrate. There will be Austen themed events in both venues between 20th May and 1st July. These will include a Regency Pastimes/Tea and Conversation afternoon, the latter hopefully in the Gallery garden, together with free Gallery tours. We will also have a stand in the Barn as part of Chawton House's JA250 Anniversary celebrations. (Last 2 weeks of May). Why not come and have a chat with the volunteers.

Various suitably-themed trails will be available for children in the Museum and the Gallery.

As usual, details of these and many other events will be available on our website



ALTON ORGAN SOCIETY

Elsbeth Mackeggie Gurney

Tim Ravalde (Chichester Cathedral) gave an exquisite organ concert in March including some of his own arrangements & compositions, many of which were in the style and structure of JS Bach. At times, it seemed they were as comprehensive as Bach's trio Sonatas and beautifully performed.

Tim opened his programme with Mathias's Fanfare which was a stirring introduction to the next 90 minutes. His two contrasting and favourite Louis Vierne's pieces were played with pure musicality and, evident, love of organ playing. Nicolaus Bruhns, Praeludium in E minor seemed to dart between many different themes and styles which kept the audience guessing.

The first of Tim's arrangements was Chorale Prelude on Down Ampney. It was inspired by Bach in a fugal structure and the main hymn tune theme was in the pedals. Bach's Prelude and Fugue in C major (nicknamed the 9/8) followed in which the fugue subject was unusually short. Tim's next two of his own arrangements - again in the style of Bach used the music by Gibbons (Song 1) and Veni, veni, Emmanuel. Joseph Jongen's Cantabile whilst sounding as if simple to play, was a skilful use of canons where the main theme is repeated. Tim ended his brilliant programme playing Holst's Jig from St Paul's Suite (arr by Jonathan Scott) and his own Toccata based on the style of Vierne. His whole programme was full of variety, skill, contrasts and brilliance.

On **April 1st** we welcome back Peter King, Organist Emeritus of Bath Abbey. Peter's programme comprises works by Liszt, Rameau and Faure, not originally written for organ and arranged by Peter himself. One of these, "Entrance de Polymnie" from Les Boreades is one of this writers' favourite pieces of music so I am intrigued to hear it arranged for organ.

The programme also includes Sonata VII by Rheinberger, whose music is pure beauty, the Chorale Prelude "O Lamm Gottes unschuldig" by JS Bach – no words are necessary, Toccata from Plymouth Suite by Percy Whitlock and Voices of the World by Iain Farrington. An eclectic & varied programme which I am sure you will enjoy.



We look forward to welcoming you to this recital which starts at 8pm. Refreshments are available from 7.30pm. Tickets £10 – more details available from Tony Willman 01420 543628 or tony.willman@mac.com.

THE SCREEN BY THE GREEN, BEECH

Joanna Curtis

Film Nights

Friday 11th April **Gladiator II** (15)
7:30 pm | Doors: 6:45 pm | Beech Village Hall
Bookings: beechvillage.org.uk/events

Saturday 26th April **Conclave** (12A)
7pm | Doors: 6:30pm | Beech Village Hall
Bookings: beechvillage.org.uk/events

Epic Battles and Vatican Intrigue at the Screen by the Green

This April, the Screen by the Green in Beech is set to transport audiences from the blood-soaked sands of the Colosseum to the shadowy corridors of the Vatican with two unmissable films: **Gladiator II** and **Conclave**.

Kicking off at 7:30pm on Friday, 11th April, is **Gladiator II** (15), directed by Ridley Scott and starring Paul Mescal and Denzel Washington. As Rome falls into tyranny, one man must fight for justice and vengeance. With breathtaking battles, gripping drama, and unforgettable performances, it's a thrilling spectacle that will leave you on the edge of your seat.

Then, at 7pm on Saturday, 26th April you can look forward to the BAFTA-winning thriller **Conclave** (12A). Starring Ralph Fiennes in a career-defining performance, this nail-biting and intense film delves into the secretive world of Vatican politics as Cardinal Lawrence oversees the election of a new Pope.

Screenings take place at Beech Village Hall, GU34 4AQ. Cabaret-style seating, licensed bar and free parking. Fully accessible venue. Tickets £6.50/£7. Space limited, early booking recommended at beechvillage.org.uk/events.

* * *

CLUBS

ALTON



ALTON CAMERA CLUB

Alton Camera Club have run a full programme of talks, competitions and outings in the past month. We welcomed Peter Merry LRPS who gave a talk on "30 Days, 10 Countries". Peter spent a month travelling through Europe on local railways. From disused industrial sites in Germany to the city walls of Dubrovnik, each location had something special to offer as his images showed.

The Club held the final round of the PDI (Projected Digital Image) competition. Judged by Rosemary Wilman HonFRPS, she awarded full marks of 10 points to Jason Bunce for 'Seaside Promenade',



Lynne Harles for 'Battersea at Night',

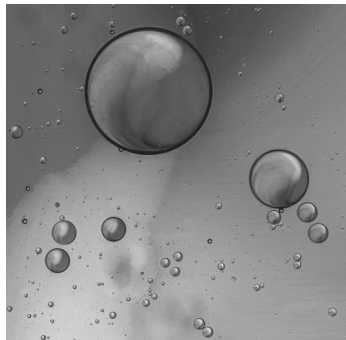
Barry Clarke for 'Hairy Shield bug' and

Steve Smith for 'The Talons are Out'.

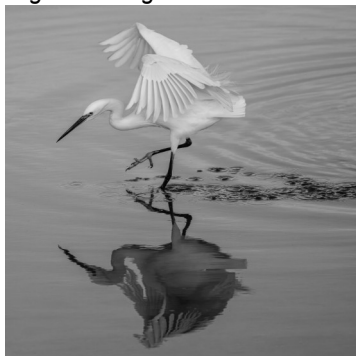
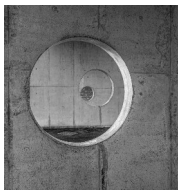
Renee Smith



Our PDI Challenge competition took place on the same evening, with the theme being 'Circles'. Rosemary awarded first place to Lynne Harles for *'Bubbles'*, second place to Renee Smith for *'Sibelius Helsinki'*, third to Jo Hawkes for *'Egret Making Circles'*.



Andrew Sorrell's image *'Alignment'* Highly Barrier



Thames Commended.



Howard Magee

Our recent field trips included a walk along the Thames Path. Starting at the Thames Barrier on a glorious spring day, we walked through industrial docklands and modern developments, stopped for lunch at the O2 and carried onwards to Greenwich for the sunset.



Canary Wharf View Steve Emmerson



Greenwich Yacht Club Ann Pitman



We also took a trip to Elvetham for the Southern Moto Cross Club event on another sunny spring day.

Two racers Jacqui Austin



Bike jumping Ian Hogg

Our members continue to have well-deserved success outside of the club. Recently club member Wendy Davies had an article on her Street Photography work published in Amateur Photographer magazine. Wendy also gave a talk on 'Capturing the Street' at the recent Photography Show at Excel London, where her work was displayed.

Wendy Davies' Photography Show talk (photo by Steve Emmerson)



Locally, we've worked closely with Alton Operatic and Dramatic Society, Holybourne Theatre and Walk Alton to provide images for their upcoming productions/website.

We're heading towards the close of our season with just two competition evenings left to go including our closely-fought (not physically!) His'nHers annual challenge, judged by local artist Tom Yendell. We have an upcoming tutorial on 'Using Your Flash' by Geoff Young and our field trip programme continues with a trip to Arundel and another Thames Path walk, this time taking in Hammersmith and Fulham. We also look forward to our Presentation Evening in mid-April.

If you're interested in photography and would like to develop your skills with like-minded friendly folk, why not consider joining our club? We resume meetings in September. Please see our website www.altoncameraclub.org.uk for more and do get in touch. We're also on Facebook and Instagram @AltonCameraClub

ALTON NATURAL HISTORY SOCIETY

Louise Fletcher

For further details: <https://www.facebook.com/groups/altonnaturalhistorysoc>

General and Membership queries: altonnathistsoc@gmail.com

<p>Sun 13th Apr</p> <p>1.30pm - 4.30pm</p>	<p>Field Meeting – Trees of Blackmoor Arboretum By kind permission of William Selborne, a 1-2 mile walk looking at a collection of trees, many exotic, planted near Blackmoor House and beyond. Generally flat ground, with some banks to climb and descend.</p> <p>Meet in parking area signed from entrance to Blackmoor House, Sotherington Lane, Blackmoor GU33 6DA. Grid ref SU7783 3306, ///drags.caring.fingertip.</p> <p>Leaders: Chris Webb 07731 939019 with William Selborne</p>
--	---

BOOKING IS ESSENTIAL FOR FIELD MEETINGS so we can cap numbers if necessary and inform those coming of last minute changes eg due to adverse weather

To book: email altonnats.events@gmail.com (if no email phone field meeting leader)

<p>Wed</p> <p>16th</p> <p>Apr</p> <p>10am-1pm</p>	<p>Field Meeting – Geology and plants of Selborne</p> <p>A circuit looking at Spring wildflowers and local geology including in building stone, along the High Street, through the churchyard, down Church meadow to the valley of Seale Stream, the Short Lythe for springs and gault clay, then up Huckers Lane for a fine cutting of Upper Greensand. Steep slope down to Seale Stream, steps down to Oakhanger Stream, uphill to High Street. May be muddy in places.</p> <p>Meet in car park behind Selborne Arms, High St, Selborne GU34 3JR. Grid ref SU7421 3351, ///domain.bogus.eyelashes. Front car park free, pay in back car park (free if you register with Gilbert White's House to go in or eat there later).</p> <p>Leaders: Dr June Chatfield 01420 82214 with geologist Ian Chisholm</p>
<p>Sun</p> <p>4th May</p> <p>5.30am-7am</p>	<p>Field Meeting – Dawn Chorus Day Walk</p> <p>Listen to the magic of a dawn chorus, on National Dawn Chorus Day. We expect to hear an array of resident birds as well as some of the spring migrants that have travelled in to breed here during the summer. We will spend time quietly listening – bring a chair if you wish – and walk gently across the common. Ground is mostly flat with sandy paths but may be wet in places. Dress for cool early morning air.</p> <p>Meet at Shortheath Common car park, off Oakhanger Road, nearest postcode GU35 9JP. Grid ref SU7751 3692, ///fantastic.unwell.remaking.</p> <p>Leader: Daniel Banks 07483 083837</p>

- **ALL WELCOME, FREE OF CHARGE** – though we strongly encourage you to join the Society if you come to three or more meetings so we can continue to cover costs.

For Membership queries email altonnathistsoc@gmail.com

- **UNDER 18s** – welcome at all meetings but please bring an adult with you (sorry, this is to comply with our insurance).
- **LIFTS** – If you would like a lift to a meeting, or can offer lifts to others, email altonnats.events@gmail.com and we'll try to match drivers with passengers.
- **NO DOGS** at field meetings please, as their presence disturbs the wildlife we want to see.
- **FIRST AID** and medication – we suggest you carry any essential medication and a basic first aid kit with you at all field meetings. Please also alert the Leader at the start if you have a relevant health or mobility problem.



THE ROTARY CLUB OF ALTON

Roy Roberts

'It's Good to Talk'

A national charity that aims to prevent suicide among men is developing its services in Hampshire, and a branch was established in Alton a few months ago.

The charity is **Andysmanclub**, set up by the family of Andrew Roberts of Halifax, who took his own life in 2016. The idea is a simple one: that men should meet once a week to talk about their fears and concerns free of judgement. There are now 240 groups across England, with 5,700 individuals attending these groups. The groups all meet at the same time - on Mondays at 7pm for a couple of hours of discussion aided by tea and biscuits.

Two facilitators from the local group, Steve Cassidy and Steve Aulman, gave Alton Rotary members a picture of how the group operates. Usually about 20 individuals attend and can talk anonymously about their personal issues of concern, although discussing political or religious matters is not allowed. The idea is that the session is "a safe space to talk and share feelings" in a supportive environment. Steve Cassidy explained that individuals can attend for as many weekly sessions as they wish – just once or twice or for many months, but a typical attendance is for about 12 weeks. He said, "Suicide is the biggest killer of young men in this country."

Anyone who would like to attend these sessions held in Alton can make contact with the facilitators initially through their website www.andysmanclub.co.uk to arrange a visit.

- Find out more about Alton Rotary at www.altonrotaryclub.uk or call Mike Sanders on 0708 093953.

ASA

Vanessa MacMahon

Forthcoming Lectures:

Tuesday 8th April: Lynne Gibson *Double Dutch symbols, emblems, double-entendre in Dutch genre paintings*

The merchants of seventeenth century Holland filled their town houses with paintings. A favourite subject was scenes of everyday life: depicting behaviour both good ... and bad. But these upright Calvinist citizens rejected Catholic Baroque melodrama.

Tuesday 13th May: Bernard Allan *Dame Laura Knight: from Newlyn to Nuremburg*

Laura Knight was the first artist to be made a Dame Commander of the Order of the British Empire, and in 1936 she became the first woman elected to the Royal Academy since 1768.

Both lectures will be held at Martin Read Hall at Alton College commencing at 7:30pm (doors open 6:45pm)

MEDSTEAD

HAMPSHIRE FEDERATION OF WI - MEDSTEAD

Gill Siddall

Members and one guest were welcomed to the meeting, cards handed out to the birthday girls and business swiftly covered.

Our May meeting will be on the 80th anniversary of VE Day so it is planned to have an appropriate theme to mark the occasion. Members will be encouraged to dress up in red, white and blue and the day will be marked with a 2025 version of a street party! Those with war time memorabilia are encouraged to bring their items along to form a display.

Speaker for the day was Peter King CBE, husband of our WI member Judi.

Peter had gallantly stepped into the breach when the original speaker had pulled out at short notice. Peter and Judi have recently moved to the village and it was fascinating to hear Peter's story of how he came to be involved in British Cycling. Peter has a very impressive CV and is a very modest man who helped pull British Cycling up from a broken and bankrupt state to being the number one cycling team in the world. This had all begun with a chance encounter in 1996 when as a chartered account Peter had been asked to cast an eye over the accounts of BCF (British Cycling Federation),

Once Peter was involved the organisation didn't look back and went from strength to strength. Peter rose to become chief executive and led the team to the Olympic Games in Athens, Beijing and London as well as Commonwealth Games in Manchester, Delhi and Glasgow. The organisation's approach to cycling became so well known that even Sir Alex Ferguson went along to the Manchester Velodrome to see how they were doing it! Peter was there through the wonderful years of the likes of Chris Hoy & Bradley Wiggins and the highlight was the Beijing Olympic Games with the team winning 14 medals including 8 golds!

At the April meeting on the 10th the speaker will be local author Louise Morrish talking about 'Forgotten Women in History' on which her first two novels are based so should be a very interesting afternoon. As usual new members and visitors are welcomed to the meeting at 2pm in Medstead Village Hall.

HAMPSHIRE FEDERATION OF WI – ROEDOWNS

Diana Constantine


Our guest speaker at the March meeting was Mike Colvin from Home Instead, a care group who give support to clients in their own home.

Mike came to speak to us about scam awareness, a subject which we all need to have knowledge about.

He told us about the various forms of scams such as phone calls by somebody impersonating police, bank or HMRC.

Remember

- **NEVER** give out your personal details
- Banks or Building Societies will **NEVER** ask you for your passwords or Pin details or even tap them into your key pad
- Report any scam to the police through Action Fraud on 0300 123 2040, or report a scam anonymously on the Action Fraud website.
- If it sounds too good to be true then it probably is!
- Watch out for poor grammar or spelling
- **NEVER** click links in suspicious texts or emails
- **NEVER, EVER, EVER, EVER**, open an attachment unless you are 100% sure of its content.

 **Home Instead.**

Where to find help

- **Action Fraud** on 0300 123 2040 or <http://www.actionfraud.police.uk>
- **Citizens Advice** on 0808 223 1133 www.citizensadvice.org.uk
- **Banks:** direct contact to bank fraud departments dial 159, mobile & landlines
- **Emails:** forward fake emails to report@phishing.gov.uk
- **Texts:** forward scam texts messages to 7726

 **Home Instead.**

Text messages stating a parcel delivery or a child has 'lost' their phone. These contacts are all trying to obtain money so it's important not to be persuaded to make any transactions. With computers don't allow strangers access and also use strong passwords, not the same one for multiple sites.

Doorstep scams include callers such as traders stating something is 'wrong' with your property, and someone saying they are police while showing an ID, then asking to check your bank cards. People are vulnerable in their own home, particularly the elderly, we all need to be vigilant for ourselves and others. The scammers will go to great lengths to obtain money if they can.

Forthcoming meetings

2nd April Lisa Marsh - Nutritional Therapist

7th May. AGM & supper

4th June. Naomi House & Jacks Place

Roedowns WI meet in the Wiltshire Room, Medstead Village Hall on the first Wednesday of each month at 19.30hrs. Guest speakers, outings and good company.

Tea/coffee, biscuits, raffle and gift voucher prize at each meeting. Visitors and new members are very welcome.

Contact Secretary on roedownssec@hampshirewi.org.uk or President Jill Kerr 01420 564116.



THE MEDSTEAD PLAYERS

Tania McCullough

Mind Over Manor at Medstead Village Hall.

It is on 11th and 12th April at 19.30 (doors open at 19.00). It is a modern comedy play. "Jasmine and Chester arrive at Summer Meadows, a large out-of-town mansion, looking for the owner. What they meet is a collection of people who are, at the very least, eccentric. When Jasmine starts to question them fiercely, the residents start to question her motives - then Jasmine goes missing..."

Tickets are £10 each and there is a bar, cafe style seating and a charity raffle. Check out our website www.medsteadplayers.co.uk or email boxoffice@medsteadplayers.co.uk.

MEDSTEAD GARDENERS CLUB

Caroline Daniels

'Flowers are happy things!' P G Wodehouse

Our March speaker was Mark Porter, who is the National Garden Scheme Chairman.

He gave out brochures with all the gardens which are opening in 2025. He then did a talk on the many gardens that enter in our locality and beyond. The NGS was founded in 1927 and since then has raised 70 million for



charities. Garden owners do not get any money from opening their gardens but the delight in sharing what they have accomplished and the beauty of them. The scheme is active in 50 counties across England and Wales. We were shown some of the gardens around Hampshire. They were stunning and inspired us to visit them this year and also support this amazing charity.

Our speaker on 1st April is Ben Cross from the British Alstroemeria & UK Flower Industry. It should be a great evening and with the lighter evenings and flowers blooming in our gardens I am sure Ben will inspire us!

The average day of seeing bluebells is 14th April. Enjoy their beauty in our woods.

April gardening jobs -

Sow sweetcorn. Plant out autumn sown sweet peas in a sunny spot. Remove weeds and mulch around base of fruit trees. Start a crop of onions and shallots.

We have our plant sale on Saturday May 17th. Put it in the diary to buy your plants ready for the summer.



~ ~ ~

NORTH HAMPSHIRE NATIONAL TRUST CENTRE (NHNTC) Wendy Crozier

A talk given on 20th Feb 2025 to the NHNTC by Dr Amanda Hinds

“Was Shakespeare really de Vere?”

Lucky members of NHNT were treated yesterday to a very entertaining lecture from Dr. Amanda Hinds on the question of the authorship of Shakespeare's plays. This focused on two main considerations: first, whether William Shakespeare of Stratford really wrote the plays we associate with him at all and, secondly, on whether the true author was Edward de Vere, 17th Earl of Oxford.

Dr. Hinds was a lovely clear speaker, enjoyable to listen to, and made a good case both for demolishing William Shakespeare's claims to have been the playwright and for the Earl of Oxford as having been the true author. There were also some very interesting insights into other possible candidates for the true authorship, notably the Earl of Derby, with references also to Marlowe and Bacon, as well as other less well-known claimants.

It was illuminating to hear some of the history associated with the controversy, which dates back to the nineteenth century and, more particularly, the first part of the twentieth century. (Few people in earlier centuries appear to have had serious doubts about Shakespeare's authorship.) An important early figure in the controversy was Thomas Looney (an unfortunate name, is ever there was one!), who in 1920 published a book identifying Shakespeare and de Vere. Other important figures included Alexander Waugh, grandson of Evelyn Waugh, and other well-known individuals.

It was particularly enjoyable to hear so much about the background of Edward de Vere, a colourful and fascinating character in his own right, with his eventful private life and his links to William Cecil, Lord Burghley, Secretary and primary advisor to Queen Elizabeth the First. Equally fascinating were some of the interesting overlaps between aspects of de Vere's life and events in some of Shakespeare's plays, particularly "Hamlet". There certainly seem to have been some striking similarities between the character of Lord Burghley and Shakespeare's character Polonius; also between Hamlet being captured by pirates and a similar event in de Vere's life.

For anyone who is sceptical about the notion that someone other than William Shakespeare of Stratford wrote the plays, the most significant factor, in my view, is that the case against Shakespeare as the author depends heavily on a fallacy that logicians used to call the "argumentum ex silentio", or argument from silence, since it takes the absence of evidence to be evidence of absence. We cannot automatically assume, for example, that, because we have no school records for Shakespeare's having attended the grammar school in Stratford, he didn't attend. (We have no evidence for other pupils either.)

Equally significant is the fact that the case against Shakespeare as the true author of the plays relies on the notion that there was a huge conspiracy theory to cover up the true author's name. While not impossible, this seems to me as unlikely as many other conspiracy theories.

Certainly Dr. Hinds gave her audience an enjoyable afternoon and plenty of food for thought.

New members always welcome – see website for details and application form
<https://www.nhntc.com>

CLUB CONTACTS

Medstead Bowls: Secretary Gill Moore 01420 563139 gillianmoore@yahoo.co.uk

Medstead Players: Tania McCullough chairman@medsteadplayers.co.uk
or Secretary Julia Halls 07747 665 968 ; or publicity@medsteadplayers.co.uk

Medstead Tennis: www.medsteadtennisclub.org.uk

Alton Rotary: Roy Roberts 07768 070 572 Mike 07808 093 953

* * *

REGULAR FEATURES

Tim Gordon-Jones

Welcome back to Bee News for 2025.



After cleaning the bottom boards (not a nice job), I inspected my three hives for the first time this year, quite early. This was during a warm spell on 8th March when the outside temperature was around 10°C, on a lovely sunny day, with little wind. All three colonies were flying but one did not have as many bees out as the other two, so I opened that one first. There was about half of the winter honey store left, but when I got to the brood chamber I was disappointed not to find any eggs, larvae or sealed brood. Additionally, the bees were only occupying a few frames so probably only a few thousand of them. I could not see the Queen so determined the colony was queenless and would die out in a couple of weeks if I didn't do something to help.

Inspecting the other colonies brought better news. They both had brood in all stages and hadn't eaten much of their winter stores. So I picked one of the brood frames that had the most brood on and at all stages (eggs, larvae and sealed cells), and swapped that with an empty frame from the first colony. The idea being that the bees in the first colony will convert one (or more) of the eggs into an 'emergency' queen cell and feed the larvae only royal jelly. It is simply this feeding that converts an ordinary egg into a queen that will rule for years and lay thousands of eggs **per day!** IF it goes to plan there should be eggs in a week and the colony will be saved.

As it was forecast to get colder and therefore less comfortable for bees to fly, I decided to provide some feed to give them a boost for spring. This comes in the form of sugar fondant, like sticky cake icing. I could use a sugar syrup but it is still quite cold and didn't want it to freeze. I've turned the mouse excluders round too so there is a wider 'slot', instead of holes for the larger bees, to reduce congestion. Some brood frames were quite old and therefore dirty so I swapped them out for new, clean frames. I will carry out another inspection when it gets warmer.

It's still a bit too early and cold for bee swarms but who knows by the time you read this you might hear a certain 'buzz' in the air. If you do please give me a call on 07771-862-890. If the first colony have not made an emergency queen I will be looking for a

swarm to collect.

COUNTRY MATTERS

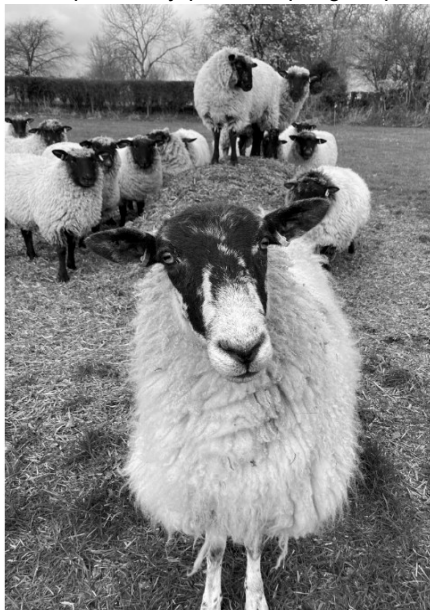
Julian Lewis

the Blue Tongue Tests were Negative

Someone has turned the taps off. After the wet 2024, and especially the winter months, it is wonderful to have a dry and sunny spell even if it is accompanied by a chilly easterly breeze. I am writing this on 18th March (as usual the night before Jill's deadline) and the weather forecast is predicting that it will be dry until the end of the month which is great. However farmers will soon be wanting some rain to help recently planted spring crops to germinate and also to aid growth of the autumn sown crops.

The blue tongue situation for my sheep became more ludicrous after I had arranged blood tests for the sheep that I wanted to sell at market. The blood tests were due to be taken on Thursday 13th February with a result promised within 3 – 5 days as the labs are working 7 days a week. 2 vets duly arrived and the blood samples were taken which took about 2 hours for 24 sheep – all done very well. *Inquisitive Ewe!*

The following day 14th Feb (Friday) the **rules were again changed by the government** – sheep going to market no longer had to have a blood test - hooray. Unfortunately as my sheep had been tested the day before, the results had to be obtained before they could be moved to market. The 3 - 5 day test result turnaround did not happen so I missed the following Salisbury Tuesday market – 18th February. After making a number of phone and email enquiries I received the blood test results on the following Wednesday evening – all negative – and the animals went to market on Tuesday 25th. A lot of fuss for no benefit.



There has been a lot of media noise about whether the UK should be growing more of its own food. Some figures that came to me today suggest that already our production is dropping fast and imports are rising rapidly. The UK used to produce about 14 -16 million tonnes of wheat a year except in occasional bad harvest years. Any surplus each year was exported. The UK has not produced a 15 million tonne (MT) wheat crop since harvest 2019. The average UK harvest since then has been 12.8 MT. The imports to meet the nation's needs after the 2024 harvest of 11.19 MT are likely to total 1.55 MT of milling wheat for bread and another 1.36 MT of feed wheat for animal feed. The imports take us back to the 14 – 15 MT that we need as a nation.

The surplus has disappeared because fewer acres are planted because of land being used for environmental crops, weather extremes, solar farm and other developments, and of course housing development on arable land reducing the cropping area. Huge areas of the best soils in the UK are being built upon in East Anglia which is crazy.

A report in last Friday's Farmers Guardian newspaper highlighted how some of the general public have little understanding about where food comes from. A farmer was talking to a farming sceptic who said that farms and farm shops were unnecessary because he could buy all the food he needed from supermarkets! When asked how and where the supermarket food supplies were sourced from he had no answer but just knew

that supermarkets always had food.

Politicians need to remember that civil unrest occurs after the general population has been short of food for 7 meals. The food supply system is so stretched that it would take very little to break that chain especially at present when there is so much global uncertainty. The UK needs farmers!

HAMPSHIRE FARMERS MARKETS

Alton Saturday 12th April

Sunday 6th	Petersfield	Sunday 6th	Romsey
Sunday 13th	Winchester	Saturday 19th	Emsworth
Sunday 20th	Alresford	Sunday 20th	Southsea
Saturday 26th	Ringwood	Sunday 27th	Winchester

Markets open 10am until 2pm except Winchester which opens at 9am.

HAMPSHIRE COUNTY COUNCIL - ALTON LIBRARY

Mon	Tue	Wed	Thu	Fri	Sat
9.30am to 1.30pm	9.30am to 5pm	Closed	9.30am to 5pm	9.30am to 5pm	9.30am to 5pm

There are many opportunities to learn and share at our Alton Library. Do look at all the posters on pages 28, 30, 32, & 35.

BUS TIMETABLE run by Cresta Coaches of Alresford (01962 773236) only on Tuesdays and Fridays (NOT Saturdays) - **SERVICE 208**

Alton High Street	9.35	11.35	13.35
Beech Well House Road	9.43	11.43	13.43
Medstead War Memorial	9.49	11.49	13.49
Bentworth The Star	9.55	11.55	13.55
Alton High Street	10.09	12.09	

St Andrew's Medstead Music Recital **Saturday 26th April at 6pm**



Come along and enjoy a mix of well-loved classical and light music, performed by local artists

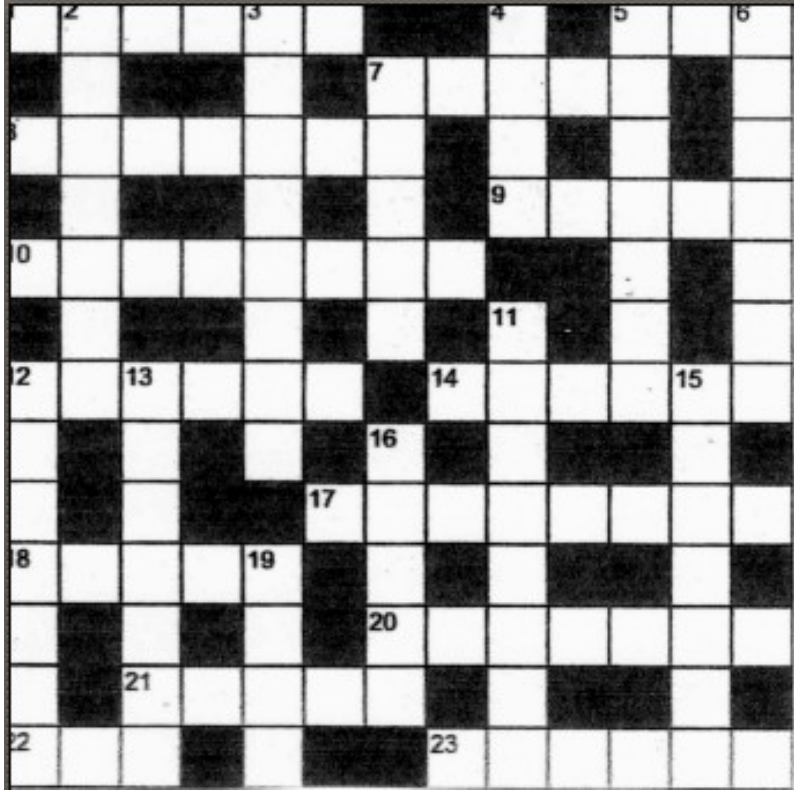
Tickets - £12.50 (concessions for children) include: Finger Buffet and a Glass of Wine or Soft Drinks which will be served in the church hall after the concert.

For tickets please contact:
Sharon Blackshaw on 01420 563937
E-mail: seblackshaw@gmail.com or
Wendy Busby on 01420 564168
E-mail: wendy.busby@hotmail.co.uk

Raising money for:
Kathryn's Mercy Home
St Andrew's Fabric Fund



CROSSWORD



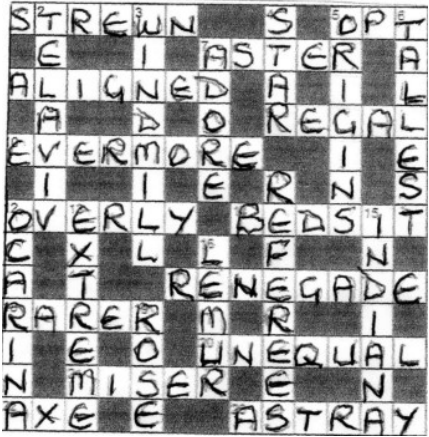
Clues Across

- 1. President Obama
- 5. Not on
- 7. Whiter
- 8. Wine Merchant
- 9. African River
- 10. User
- 12. Taste
- 14. Elder
- 17. Sermonise
- 18. Tend
- 20. Relations
- 21. Wimp
- 22. Might
- 23. Muddled

Clues Down

- 2. American State
- 3. Seeks advice
- 4. Scheme
- 5. Paper folding art
- 6 Hairier
- 7. Primp
- 11. Stayed
- 12. Spectre
- 13. Biblical disease
- 15. Lewd
- 16. Brash
- 19. Not hard

Answers to last month's Crossword



EVENTS

St Andrew's

**JUMBLE
SALE!**



Saturday 5th April from 1.30 - 3.30

St Andrew's Church Hall, Medstead

Items can be delivered between 10 - Midday

ONLY good quality used goods.

Please, please **NO** unsaleable items.

Enquiries medsteadchurchbookings@gmail.com

07709 553804



Saturday 5 April 10am - 1:30pm

£25

Booking is essential, please visit

<https://shop.hants.gov.uk/collections/learning-in-libraries> to book your place. If you have issues booking online please contact branch staff or call 02392 232957



Tuesdays 22 April – 20 May 1pm – 3pm

FREE

Booking is essential, please visit

shop.hants.gov.uk/collections/learning-in-libraries to book your place. If you have issues booking online please contact branch staff or call **02392 232957**



BROADLANDS EQUINE THERAPY AND RIDING FOR THE
DISABLED



DOORS OPEN AT 6:45
25 APRIL, 2025

Have a fun night full of challenges on our Quiz Night!
Tickets to include Chilli Meal (please make us aware of
any allergies on booking)

Fill the evening with your favorite drink and have fun
with your friends. Register now and book a table for this
fun-filled night!

Raffle Prizes to be won

Hosted at Medstead Village Hall

REGISTER YOUR TEAM OF 6 TODAY!

£15 PER PERSON

Visit Our Website

www.broadlandsgrouprda.org.uk



CHARITY NUMBER:

1170398

Broadlands
Equine Therapy & RDA





Mindful Sculpture
Alton Library

Fridays 25 April - 23 May 1pm - 3pm

FREE tuition, £15 for materials

Booking is essential, please visit

shop.hants.gov.uk/collections/learning-in-libraries to book your place. If you have issues booking online please contact branch staff or call **02392 232957**



Starting with Oil: A Beginner's Journey
Alton Library

Friday 25 April - 23 May 10am - 12pm

FREE tuition, £15 materials fee

Booking is essential, please visit

<https://shop.hants.gov.uk/collections/learning-in-libraries> to book your place. If you have issues booking online please contact branch staff or call 02392 232957





Screen by the Green

7:30 pm Fri 11 April

GLADIATOR II

beechvillage.org.uk





Hampshire
County Council

Library Service



Emergency First Aid Alton Library

Saturday 26 April 9:45am - 4:45pm

FREE tuition, optional £25 certification fee

Booking is essential, please visit

<https://shop.hants.gov.uk/collections/learning-in-libraries> to book your place. If you have issues booking online please contact branch staff or call 02392 232957



Screen by the Green

7pm Sat 26 April



Book Now: beechvillage.org.uk

**Raising funds for Broadlands Equine
Therapy and RDA**

Charity Number : 1170398



Sophie de Rouet

**Join us on the 6TH MAY at 18:30 for a 19:00 start at
Wivelrod Barns
GU34 4AS**

**to hear about Sophie's amazing experiences in
the Mongol Derby**



The Mongol Derby is an equestrian endurance race. It extends 1,000 kilometres (620 mi) through the Mongolian Steppe and is the world's longest horse race.

£15 per person.

Tickets to include entry a glass of wine on arrival and nibbles.

www.broadlandsrda.org.uk/events



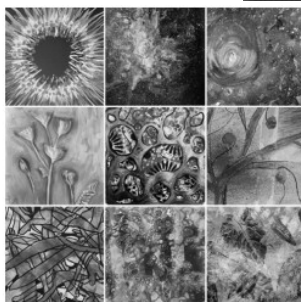
Mixed Media Relief Artwork for Beginners

Saturdays 10 May - 7 June 10am - 12pm

FREE tuition, £12 for materials

Booking is essential, please visit

<https://shop.hants.gov.uk/collections/learning-in-libraries> to book your place. If you have issues booking online please contact branch staff or call 02392 232957



Expressive Watercolours for Improvers

Saturdays 10 May - 7 June 1:30pm - 3:30pm

£82 tuition, plus £10 materials fee

Booking is essential, please visit

<https://shop.hants.gov.uk/collections/learning-in-libraries> to book your place. If you have issues booking online please contact branch staff or call 02392 232957





MEDSTEAD GARDENERS' CLUB
ANNUAL PLANT SALE
SATURDAY 17th MAY 2025
10.30 A.M. to 12 NOON

MEDSTEAD VILLAGE HALL

Shrubs, perennials, fruit bushes, vegetable plants, herbs and much more

Admission pp: 50p in cash only please
Purchases can be cash or card – thank you

For more information visit our website: www.medsteadgardenersclub.org

Maybe subject to change without prior notice



Kindly sponsored by

RATHBONES

*Broadlands Equine Therapy & RDA
70th Anniversary Celebration*

**SUMMER
PARTY**

JUNE 20TH 2025

7:00 PM
Carriages at Midnight

WIVELROD BARN
Wivelrod, Alton, GU34 4AS

*£60 per person
to include:
Drink on Arrival
2 course meal
Casino, Magician &
Live music
Smart Casual*

Tickets available on our website:
www.broadlandsgroupnda.org.uk/events

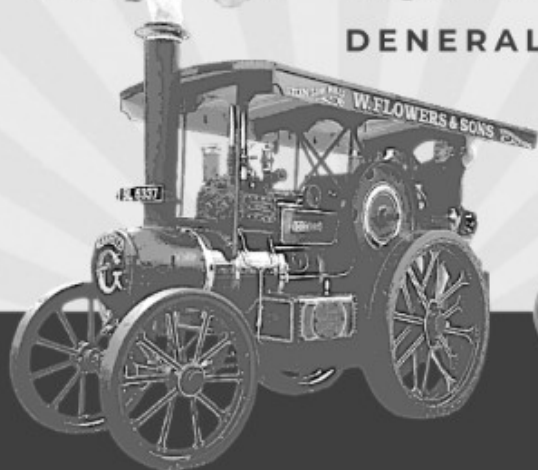
Charity Number: 1170398

All proceeds to

Broadlands
Equine Therapy & RDA
197 000

DENE RALLY

DENERALLY.CO.UK



21ST - 22ND JUNE 2025

CLASSIC CARS | MOTORBIKES
WILD WEST SHOWS | TRADE STANDS
LIVING HISTORY | TRACTORS
STEER A STEAM ENGINE | PLUS MORE!

GATES OPEN 10AM-4PM

ADULT £7, CHILD £5 (2-16YRS), FAMILY (2A+3C) £20*
* ANY EXTRA CHILDREN WILL BE £1 PP
ARMED FORCES RECEIVE £1 DISCOUNT



PROCEEDS FROM THE
RALLY ARE DONATED
TO OUR SELECTED
CHARITIES



CHARLWOOD LANE, ROPLEY, SO24 0HA

Cancer Care Services

**A free talk to be given by
Dr Julie Smallwood
of Mansfield Park Surgery**

*on behalf of
Mansfield Park Surgery
Patient Participation Group
All Welcome*

**Medstead Village Hall
Tuesday 22nd May
7.00pm—8.00pm**



ALTON WALKING CHURCH FOR MEN

**Wednesday 9th April,
6.30pm meeting at the
Binsted Inn**

ROBIN KEMP

**familykemp@tiscali.co.uk
07957 653 403**

**A gentle 90 minute walk with time to
pause and reflect. Refreshments
after at the pub
www.potr-alton.co.uk**



A monthly course led by Revd Peter Walker
on the 4th Sunday of each month (January -
June) in St Lawrence Church, Alton
6pm - 7.15pm followed by refreshments

***worship... teaching...discussion... prayer...
fellowship***

**6pm - 7.15pm . Please not April's session
will be in the Parish Centre**

***worship... teaching...discussion... prayer...
fellowship***

Peter is a gifted teacher and communicator who
feeds hearts and minds when he opens the
Scriptures.

We hope many will join us for a feast of biblical
theology that will give us fresh confidence to
continue on the 'Jesus Way'

Copies of the book available for £8.00 (50%
discount)



For more information, or to
register your interest in the
course, email
office@potr-alton.co.uk



Bentworth, Lasham and Shalden Parish

Lent **LUNCHES**



Wednesday 26th March, 2nd and 9th April
at Holy Rood Church, Holybourne

Time: 12.30 to 2.00 pm

Donations are much appreciated as all
the money raised goes to support the
ministry team in Karamoja.

Everyone is welcome!

Alton churches Lent 2025

Table Talk – conversations with Jesus



Wesley Room, The Maltings

7.15pm - refreshments

7.30-8.45pm

Worship, Prayer Teaching & Discussion

Thursday 20th March - Welcome to the Table

David Chattell - Parish of the Resurrection

Thursday 27th March - Dinner at the Table

Andrew Lawrence - Harvest Church

Thursday 3rd April - Turning over the Tables

Andrew Micklefield - Parish of the Resurrection

Thursday 10th April - Supper at the Table

Howard Wright - Church of the Good Shepherd

Thursday 17th April - Breaking Bread around the Table

Tim Suffield - Harvest Church

www.altonchoral.org.uk

Charity no.900258

Alton Choral Society Presents

Reflective Music for Good Friday

18th April, 6pm

Alton Methodist Church

Admission free

Retiring collection for






GOOD FRIDAY 18TH APRIL

OUTDOOR EASTER SERVICE 10AM

**Retelling of the Easter Story
with live animals
Followed by hot cross buns and
refreshments.
Outside St Lawrence Church**



THE LAST HOUR

**Music and Meditation service
2pm at St Lawrence Church**



WWW.POTR-ALTON.CO.UK

SERVICES FOR APRIL 2025

BENTWORTH LASHAM MEDSTEAD SHALDEN

6th April - THE FIFTH SUNDAY OF LENT

Purple

Holy Communion (CW)		10.00a.m		
Holy Communion (CW)				10.00a.m
Holy Communion (CW)			11.00a.m.	

13th April – PALM SUNDAY

Red

Holy Communion			8.00 a.m.	
Holy Communion	10.00a.m.			

14th, 15th, 16th 7pm Compline St Andrew's church Medstead

17th 7pm Maundy Thursday Communion St Andrew's church

18th 2pm Good Friday - Contemplation St Andrew's church

20th April – EASTER DAY

White

Easter Communion (CW)	10.00a.m.			
Easter Communion (CW)				10.00a.m.
Easter Communion (CW)		11.00a.m		
Easter Communion (CW)			11.00a.m.	

27th April - THE SECOND SUNDAY OF EASTER

White

Holy Communion (CW)	10.00a.m.			
Café Church in the church hall			11.00 a.m.	

POTR Services for April 2025

6th April

8am BCP Holy Communion	St Lawrence
10.30am POTR Altogether	St Lawrence

18th Good Friday

10am The Easter Story	St Lawrence
2pm The Last Hour	St Lawrence

13th April

9.15am Communion Service	St Peter's
9.30am Morning Worship	Holy Rood
10.30am Communion Service	St Lawrence
3pm Afternoon Worship	All Saints
6pm Evening Prayer	St Lawrence

20th April EASTER DAY

8am Said Holy Communion	St Lawrence
9.15am Communion Service	St Peter's
9.30am Communion Service	Holy Rood
3pm Easter Communion Service	All Saints
10.30am Morning Worship	St Lawrence
6pm Choral Evensong	St Lawrence

14th, 15th, 16th April Holy Week

8pm Compline St Lawrence Church

17th April Maundy Thursday

7.30pm Communion All Saints

7.30pm Ecumenical Lent Talk with
Communion at the Maltings

27th April

9.15am Communion Service	St Peter's
10.30am Communion Service	St Lawrence
4pm Lego Church	Holy Rood
6pm Evening Worship	St Lawrence

Every Wednesday 10am

Holy Communion All Saints